

## ARCHITECT'S ADDENDUM

Addendum Number: 004

**Date:** Tuesday, January 07, 2020

**RE:** KANE COUNTY - Multi-Use facility

**Prepared By:** Viral Shah  
Cordogan, Clark & Associates

**CCA Project No.:** 19-349

**To:** Prospective Bidders

Subject: Addendum No. 004 to the Construction Documents for the Kane County Multi-Use Facility.

This Addendum forms a part of the Construction Documents and modifies the original Construction Documents, dated 12/16/2019. Acknowledge receipt of this Addendum in space provided on the Bid Form. Failure to do so may subject Bidder to disqualification.

### THE FOLLOWING ITEMS ARE TO BE INCLUDED IN THE PROPOSAL.

Clarifications To The Specifications: See following attached revised specifications:

- 112100 Building Equipment

Clarifications To The Drawings: See following attached revised sheets:

- A3.1B Enl. Sheriff Ceiling Plan – First Floor
- A10.1 Overall Equipment Floor Plan
- A10.1B Enl. Sheriff Area Equipment Floor Plan

RFI and Response Log: See attached

- Items #7 – Revised from Addendum 003 issued on 01.06.2020
- Items #93 and 94 – New Items for Addendum 004

Clarification Log: See attached

- Items #7 and 11 – Revised from Addendum 003 issued on 01.06.2020
- Items #13 and 14 – New Items for Addendum 004

End Of Addendum No. 004

L:\CCA\2019jobs\19-349 Kane County Judicial Center South Campus\7-Bidding-Negotiation\Addendum\_04\ADDENDUM 4

---

KANE COUNTY  
KANE COUNTY MULTI-USE FACILITY  
37W655 ILLINOIS 38  
CCA PROJECT NUMBER: 19-349  
BID / PERMIT SET

CORDOGAN, CLARK & ASSOCIATES, INC.  
960 RIDGEWAY AVENUE  
AURORA, ILLINOIS  
630-896-4678  
KC BID NO: 02-020  
DECEMBER 16, 2019

---

## SECTION 112100 – BUILDING EQUIPMENT

### PART 1 - GENERAL

#### 1.1 RELATED DOCUMENTS

- A. Drawings and general provisions of the Contract, including General and Supplementary Conditions and Division 01 Specification Sections, apply to this Section.

#### 1.2 SUMMARY

- A. Section Includes:
  - 1. Building equipment.

#### 1.3 COORDINATION

- A. Coordinate equipment layouts and installation with other work, including layout and installation of lighting fixtures, HVAC equipment, and fire-suppression system components.
- B. Coordinate locations and requirements of utility service connections.
- C. Coordinate sizes, locations, and requirements of the following:
  - 1. Floor areas with positive slopes to drains.

#### 1.4 PREINSTALLATION MEETINGS

- A. Preinstallation Conference: Conduct conference at Project site.

#### 1.5 ACTION SUBMITTALS

- A. Shop Drawings: For fabricated equipment. Include plans, elevations, sections, roughing-in dimensions, fabrication details, utility service requirements, and attachments to other work.

#### 1.6 FIELD CONDITIONS

- A. Field Measurements: Verify actual dimensions of construction contiguous with equipment by field measurements before fabrication. Indicate measurements on Coordination Drawings.

## PART 2 - PRODUCTS

### 2.1 EQUIPMENT (Contractor provided and installed, U.N.O.)

- A. Cadaver Rack (Equipment Tag "1")
  - 1. Description: Rack with 14.5" body clearance between trays.
  - 2. Dimensions: 81.5" L x 27.25" W x 73.2" H
  - 3. Model #: MOPEC IF23401
- B. Cadaver Tray (Equipment Tag "2")
  - 1. Description:
  - 2. Dimensions: 77.5" L x 27" W x 2.75" H
  - 3. Model #: MOPEC JC027
- C. Overhead Motorized Lift (Equipment Tag "3")
  - 1. Description: THE ULTIMATE 1000 LIFT
  - 2. Dimensions: " L x 18" W x 8.5" D
  - 3. Mount: Ceiling, with Steel Track System
  - 4. Capacity: 1,000 lbs
  - 5. Model #: MOPEC JC027
- D. Scale Platform (Equipment Tag "4")
  - 1. Description: Rugged Floor Scale
  - 2. Dimensions.: 6'-0" X 4'-0"
  - 3. Manufacturer: Mettler Toledo
  - 4. Mounting: Recessed In Floor
- E. Cadaver Lift (Equipment Tag "5")
  - 1. Description: Adjustable Hydraulic Lift Systems
  - 2. Dimensions: 95.2" L X 29.2 - 33.2" W
  - 3. Model #: JD5000
  - 4. Elevation Range: 13.3" - 76.7"
  - 5. Manufacturer: Moped Red Wing
- F. Pallet Racking (Equipment Tag "6")
  - 1. Description: Heavy duty one piece 13 gauge steel uprights with 2" allowable height adjustments at 2" increments. High strength 15 gauge steel beams with step beam design that accommodates cross bars and decking. Floor welded brace. 12 gauge welded base plate anchors.
  - 2. Basis of Design: GLOBAL INDUSTRIAL , MODEL # 796600, WITH 6 LEVELS OF RACKS
  - 3. Finish: Epoxy
    - a. Color: TBD
- G. Portable X-ray Machine (Equipment Tag "7")
  - 1. Description: Portable X-Ray Machine
  - 2. Dimensions: 45.5" L X 25.5" W X 76" H
  - 3. Model #: GE DEFINIUM AMX 700
- H. Vehicle Lift (Equipment Tag "8")

1. Description: Two-Post Lift Series, Asymmetrical Rotated Column Design, 3-Stage Arms
2. Capacity: 10,000LBS.
3. Model #: SPOA10 TRIO

I. Vehicle Lift (Equipment Tag “9”)

1. Description: Two-Post Lift Series, Asymmetrical Rotated Column Design, 3-Stage Arms
2. Capacity: 10,000LBS.
3. Model #: SPOA10 TRIO

J. Vehicle Lift (Equipment Tag “10”)

1. Description: Heavy Duty Service Lift
2. Capacity: 16,000LBS.
3. Model #: MOHAWK LIFT MODEL TP-16
4. No height restrictive overhead cable covers that limit lifting height

K. Vehicle Lift (Equipment Tag “11”)

1. Description: FOUR-POST LIFT
2. Capacity: 18,000LBS.
3. Dimensions: 25' 11" L x 137 11/16" W x 6' 5 3/4" H
4. Model #: SM18-EL ROTARY

L. Pressure Washer (Equipment Tag “12”)

1. Description: HG Series: Hot Water - Natural Gas/Lp – Belt Drive
2. Dimensions: 56.5" L x 29" W x 49.75" H
3. Model #: HG-3004-3208 AND HG-3004-3230

M. Tire Rack (Equipment Tag “13”)

1. Description: Heavy Duty Tire Rack
2. Mounting: Wall Mount
3. Accessories:
  - a. Heavy Duty 12 gauge beam connectors,
  - b. 3 hooks at each end,
  - c. 14 gauge uprights
    - 1) Size: 1'-3/4" x 1'-3/4"
4. Basis Of Design: Global Industrial Model # 613139

N. Tire Changer (Equipment Tag “14”)

1. Description: COATS RC SERIES
2. Model # RC-55

O. Wheel Balancer (Equipment Tag “15”)

1. Description: COATS 1250 SERIES 3D
2. Dimensions: 57" W x 50" D
3. Weight: 680 lbs

P. Compressor (Equipment Tag “16”)

1. Description: Fixed Speed Rotatory Screw Compressors By Ingersoll Rand
2. Air System: UP6-5TAS-150
3. Accessories: Base Plate and Receiver Mounted Units, 80 gallon receiver tank.
  - a. Dimensions: 70.2" L x 29" W x 56.6" H.

- Q. Lubricant Tank (Equipment Tag “17”)
1. Provided by Owner, Contractor to Install
- R. Oil Filter Crushers (Equipment Tag “18”)
1. Description: Pneumatic Oil Filter Crusher, 10 Ton Capacity
  2. Dimensions: 17” W x 17” D x 29.5” H
  3. Weight: 228 lbs
  4. Model #: RP-20FC RANGER
  5. Accessories: Stands
    - a. Dimensions: 27.75” W x 17.75” D x 42” H
    - b. Weight: 72 lbs
- S. Grease Piston Pump Package, Part Of Vehicle Fluid Dispensing System (Equipment Tag “19”)
1. Grease Piston Pump Package, #1151-006, 400 lbs Stationary Unit by Balcrack including but not limited to:
    - a. Panther HP 50:1 Pump
    - b. Drum cover
    - c. Follower Plate
    - d. Band Dolly for 55 Gal Drum
    - e. Refer to Vehicle Fluid Dispensing System entry below
- T. Engine Oil Tank Package, Part Of Vehicle Fluid Dispensing System (Equipment Tag “20”)
1. Basis of Design: 400 Gallon Double Wall Tank Package, #1135-029, by Balcrack/Roth including but not limited to:
    - a. Lightweight Double Wall Tank – 400 Gallons
    - b. Hose Reel w/ EVO series hose, 50’ length
    - c. Piston Pump, Lynx HD 5:1
    - d. Air Quick connect coupler and nipple
    - e. Accessories to include:
      - 1) Reel Base
      - 2) Tie down Anchor Kit
      - 3) Tank Level Gauge
      - 4) Mounting Base Clips
    - f. Refer to Vehicle Fluid Dispensing System entry below
- U. Transmission Fluid Tank Package, Part Of Vehicle Fluid Dispensing System (Equipment Tag “21”)
1. Basis of Design: 275 Gallon Double Wall Tank Package, #1135-017, by Balcrack/Roth including but not limited to:
    - a. Lightweight Double Wall Tank – 275 Gallons
    - b. Hose Reel w/ EVO series hose, 50’ length
    - c. Piston Pump, Lynx HD 5:1
    - d. Air Quick connect coupler and nipple
    - e. Accessories to include:
      - 1) Reel Base
      - 2) Tie down Anchor Kit
      - 3) Tank Level Gauge
      - 4) Mounting Base Clips
    - f. Refer to Vehicle Fluid Dispensing System entry below
- V. Hanging Scale (Equipment Tag “22”)

1. Description: Digital Hanging Scale
2. Model #: CCI HS-6

W. Wall Mount TV

1. Description: 55" Class 4K Ultra HD, HDR Smart QLED Wall mount TV
2. B.O.D. : QN55Q60RAFXZA by Samsung
  - a. Accessories: Wall Mount Bracket (WMN-M12EB/ZA)

X. Vehicle Fluid Dispensing System

1. Provide Full distribution system for oil, transmission fluid and grease between storage tanks and service station locations.
2. Provide package components as well as (but not limited to) all hoses, piping, mounting hardware, couplers, nozzles, handles, reels, and necessary material, etc. For a complete and functioning installation as required. No exceptions.
3. Provide intermediate ceiling mount reels as needed to extend distribution lines ending with 50' long hoses down to work area.
4. Provide all manufacturer recommended supports for hose runs between reels and storage tanks.
5. For Oil and Transmission fluid locations, provide DR Series Metered Control Handles
6. For Oil and Transmission fluid locations, provide 1 full set of DR Extensions and Nozzle heads for each hose type and for each service station location.
7. For Grease locations, provide Comfort Grip Grease Handle with 36" whip hose and Z-swivel
8. Provide Colored Handle shrouds compatible with all handles indicated, min. 5 colors.
9. Provide hose stops for all hoses.
10. Provide additional air compressor sized to service all equipment utilized in the Fleet management area including Fluid Dispensing system equipment.

Y. Fluid Inventory Control System

1. Provide wireless control system for monitoring Vehicle Fluid Dispensing system
2. Basis of Design Fusion 2.4 CCS Fluid Inventory Control System by Balcrack
  - a. Include wireless control handles

Z. Fuel Station Equipment

1. Gasoline Tank Delivery System
  - a. Double wall 3,000 gallon Flameshield Small Fleet Tank mounted on saddles by Envirosafe
  - b. Provide all required and recommended accessories and components including but not limited to:
    - 1) Metered Pump with filter hose and nozzle
    - 2) Pressure relief valves
    - 3) Anti-siphon valve
    - 4) Stack and Emergency Vents
    - 5) Monitoring well
    - 6) Overspill container
    - 7) Step ladder with platform
  - c. UL 142 Labeled and Listed
  - d. Fuel Station Concrete Pads and Bollards
    - 1) Min. size 13'-1" x 29'-6", confirm manufacturer's recommended size prior to installation

- a) Concrete Slab to be 6" thick utilizing 3,000 psi concrete with wire mesh and #5 rebar, layout per manufacturer's recommendations
  - 2) Bollards
    - a) Provide 8" round Schedule 80 steel bollards poured in place, filled with concrete.
    - b) Quantity: 20, spaced evenly at perimeter of concrete pad
- 2. Diesel Tank Delivery System
  - a. Double Wall 500 gallon Flameshield Small Fleet Tank mounted on saddles by EnviroSAFE
  - b. Provide all required and recommended accessories and components including but not limited to:
    - 1) Metered Pump with filter hose and nozzle
    - 2) Pressure relief valves
    - 3) Anti-siphon valve
    - 4) Stack and Emergency Vents
    - 5) Monitoring well
    - 6) Overspill container
    - 7) Step ladder with platform
  - c. UL 142 Labeled and Listed
  - d. Fuel Station Concrete Pads and Bollards
    - 1) Min. size 13'-1" x 29'-6", confirm manufacturer's recommended size prior to installation
      - a) Concrete Slab to be 6" thick utilizing 3,000 psi concrete with wire mesh and #5 rebar, layout per manufacturer's recommendations
    - 2) Bollards
      - a) Provide 8" round Schedule 80 steel bollards poured in place, filled with concrete.
      - b) Quantity: 14, spaced evenly at perimeter of concrete pad
- 3. Fuel Management system – Gasoline and Diesel
  - a. Superbox Inventory Control System as provided by EnviroSAFE
    - 1) Connect both Gasoline hose and Diesel hose
    - 2) Provide all required and recommended accessories and components including but not limited to:
      - a) Pedestals
      - b) Relay Contacts
      - c) Wireless Components
      - d) Brackets

## 2.2 MISCELLANEOUS MATERIALS

- A. Elastomeric Joint Sealant: ASTM C920; silicone. Type S (single component), Grade NS (nonsag), Class 25, Use NT (nontraffic) related to exposure, and Use M, G, A, or O as applicable to joint substrates indicated.

## PART 3 - EXECUTION

### 3.1 INSTALLATION

- A. Install equipment level and plumb, according to manufacturer's written instructions.
  - 1. Connect equipment to utilities.
  - 2. Provide cutouts in equipment, neatly formed, where required to run service lines through equipment to make final connections.
- B. Complete equipment assembly where field assembly is required.
  - 1. Provide closed butt and contact joints that do not require a filler.
  - 2. Grind field welds on stainless steel equipment until smooth and polish to match adjacent finish.
- C. Install closure-trim strips and similar items requiring fasteners in a bed of sealant.
- D. Install joint sealant in joints between equipment and abutting surfaces with continuous joint backing unless otherwise indicated. Produce airtight, watertight, vermin-proof, sanitary joints.

### 3.2 CLEANING AND PROTECTING

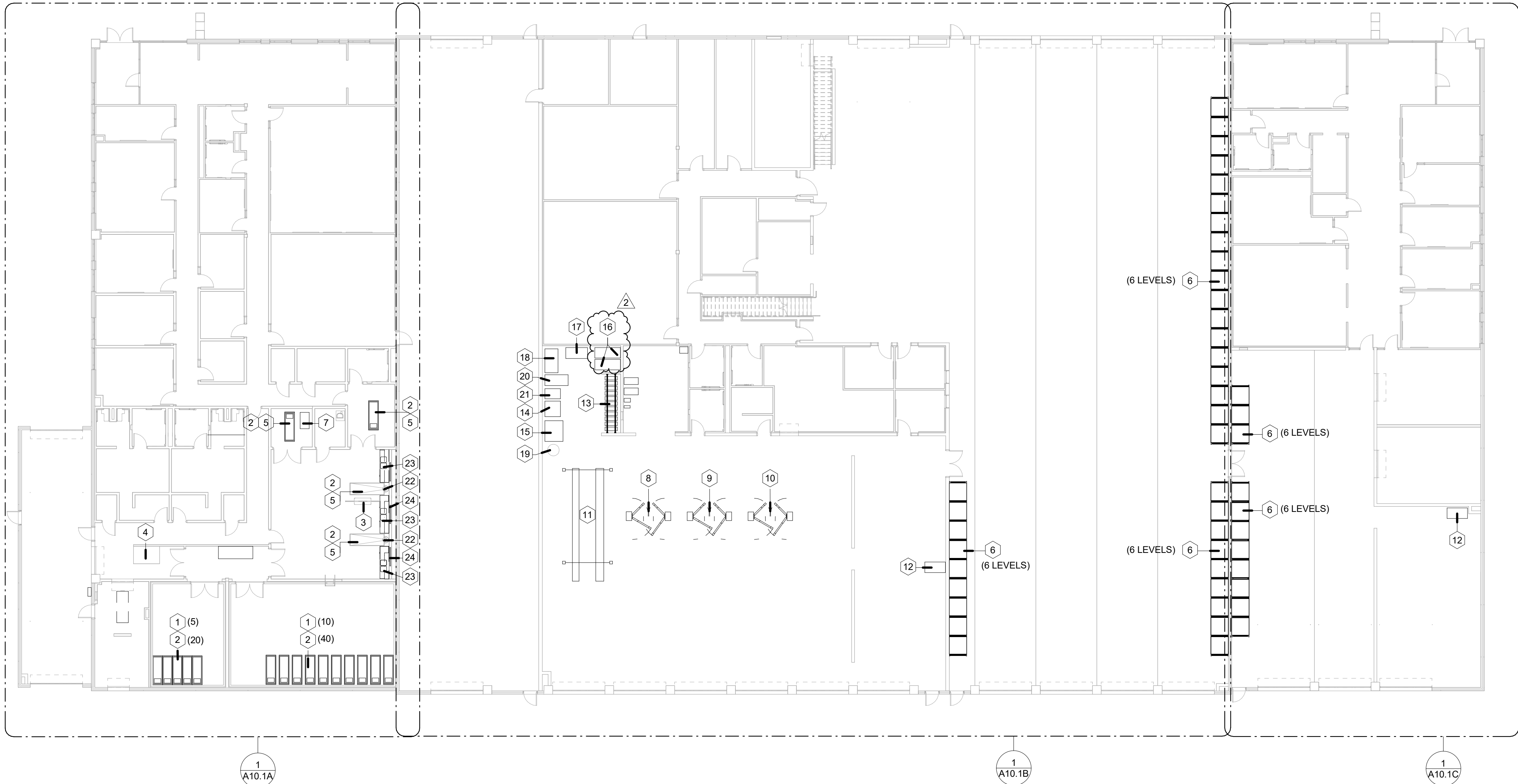
- A. After completing installation of equipment, repair damaged finishes.
- B. Clean and adjust equipment as required to produce ready-for-use condition.
- C. Protect equipment from damage during remainder of the construction period.

END OF SECTION 112100





NORTH  
1 FIRST FLOOR PLAN  
1/16" = 1'-0"

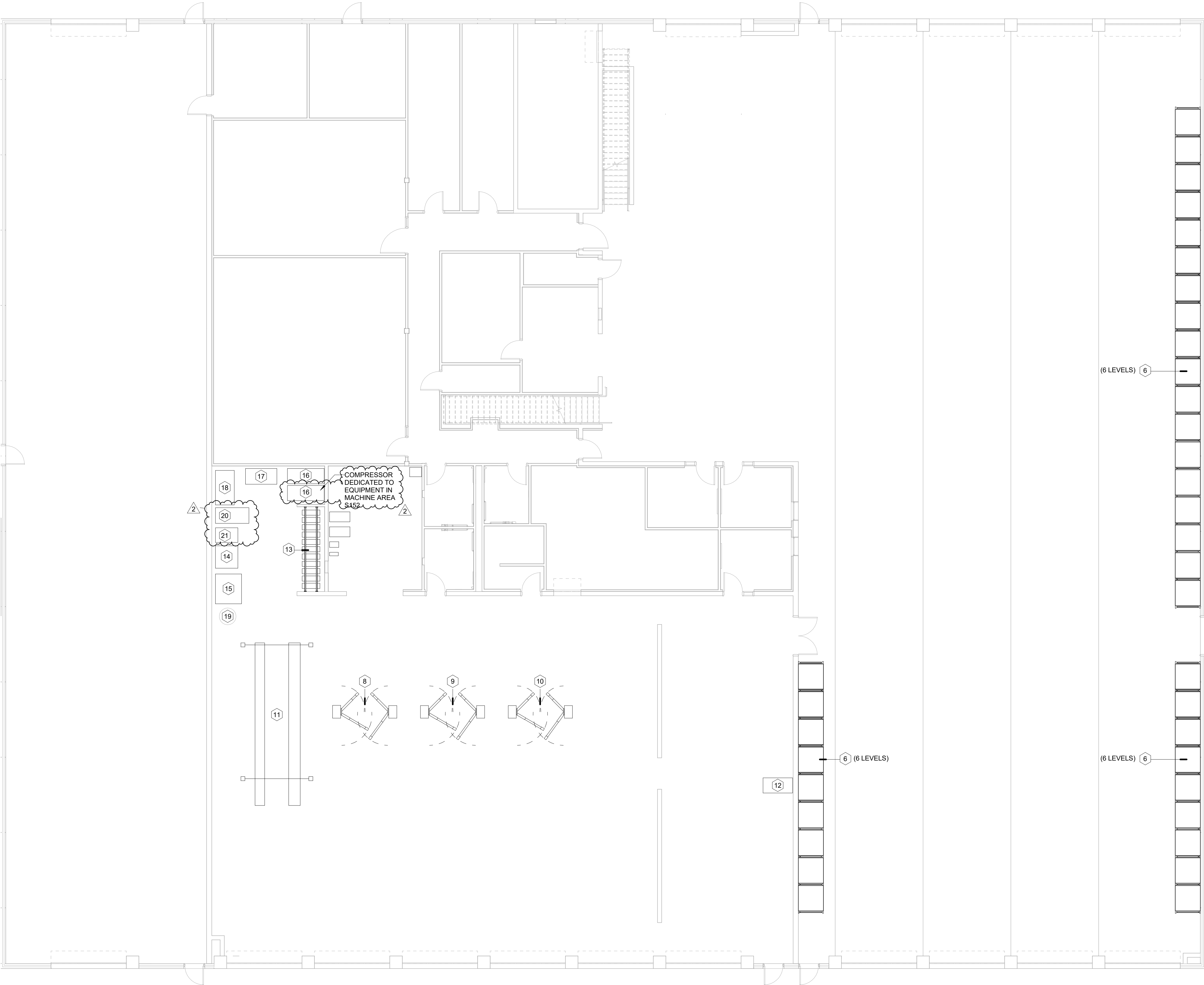


EQUIPMENT SCHEDULE		
KEYNOTE	EQUIPMENT	MANUFACTURES AND MODEL
1	CADAVER RACK	MOPEC IF23401, 81.5" L x 27.25" W x 73.2" H; 14.5" BODY CLEARANCE BETWEEN TRAYS.
2	CADAVER TRAY	MOPEC JC027, 77.5" L x 27" W x 2.75" H.
3	OVERHEAD MOTORIZED LIFT	THE ULTIMATE 1000 LIFT, 46" L x 18" W x 8.5" D. CEILING MOUNTED; WITH STEEL TRACK SYSTEM. 1000 POUNDS LIFTING CAPACITY.
4	SCALE PLATFORM	RUGGED FLOOR SCALE METTLER TOLEDO. DIM.: 6' x 4'. RECESSED IN FLOOR
5	CADAVER LIFT	MOPED RED WING MODEL JD5000, ADJUSTABLE HYDRAULIC LIFT SYSTEMS. DIMENSIONS: 95.2" L X 29.2 - 33.2" W. ELEVATION RANGE: 13.3" - 76.7"
6	PALLET RACKING	HEAVY DUTY ONE PIECE 13 GAUGE STEEL UPRIGHTS WITH 2" ALLOWABLE HEIGHT ADJUSTMENTS AT 2" INCREMENTS. HIGH STRENGTH 15 GAUGE STEEL BEAMS WITH STEP BEAM DESIGN THAT ACCOMMODATES CROSS BARS AND DECKING. FLOOR WELDED BRACE. 12 GAUGE WELDED BASE PLATE ANCHORS. FINISH EPOXY FINISH; COLOR: TBD. BASIS OF DESIGN - GLOBAL INDUSTRIAL, MODEL # 796600, WITH 6 LEVELS OF RACKS.
7	XRAY	GE DEFINIUM AMX 700 PORTABLE X-RAY MACHINE. OVERALL DIMENSIONS: 45.5" L X 25.5" W X 76" H.
8	VEHICLE LIFT	SPOA10 TRIO, TWO-POST LIFT SERIES, 10,000LBS. CAPACITY. ASYMMETRICAL ROTATED COLUMN DESIGN, 3-STAGE ARMS.
9	VEHICLE LIFT	SPOA10 TRIO, TWO-POST LIFT SERIES, 10,000LBS. CAPACITY. ASYMMETRICAL ROTATED COLUMN DESIGN, 3-STAGE ARMS.
10	VEHICLE LIFT	MOHAWK LIFT MODEL TP-16, 16,000LBS. CAPACITY. HEAVY DUTY SERVICE. DO NOT USE HEIGHT RESTRICTIVE OVERHEAD CABLE COVERS THAT LIMIT LIFTING HEIGHT.
11	VEHICLE LIFT	MOHAWK TR-25 4 POST LIFT; 25,000 LBS CAPACITY, WITH SET OF TWO (2) ROLLING HYDRAULIC JACKING BEAMS WITH 25,000 LBS CAPACITY.
12	PRESSURE WASHER	HG SERIES: HOT WATER - NATURAL GAS/LP - BELT DRIVE. MODEL HG-3004-3208 DIMENSIONS: 56.5" L x 29" W x 49.75" H.

EQUIPMENT SCHEDULE		
KEYNOTE	EQUIPMENT	MANUFACTURES AND MODEL
13	TIRE RACK	TIRE RACKS - HEAVY DUTY TIRE RACK TO BE ATTACHED TO WALL, WITH HEAVY DUTY 12 GAUGE BEAM CONNECTORS, 3 HOOKS AT EACH END, 14 GAUGE UPRIGHTS MEASURING 1'-3/4" X 1'-3/4". FINISH - GRAY POWDER COAT. BASIS OF DESIGN: GLOBAL INDUSTRIAL MODEL # 613139
14	TIRE CHANGER	COATS, RC SERIES, MODEL #RC-55.
15	WHEEL BALANCER	COATS 1250 SERIES 3D. 57" W x 50" D. WEIGHT: 680LBS.
16	COMPRESSOR	FIXED SPEED ROTATORY SCREW COMPRESSORS. INGERSOLL RAND. AIR SYSTEM: UP6-STAS-150. BASE PLATE AND RECEIVER MOUNTED UNITS: 80 GALLON RECEIVER TANK: 70.2" L x 29" W x 56.6" H.
17	LUBRICANT TANK	BY OWNER
18	OIL FILTER CRUSHERS	RP-20FC RANGER, PNEUMATIC OIL FILTER CRUSHER, 10 TON CAPACITY. 17" W x 17" D x 29.5" H, WEIGHT: 228LBS. INCLUDES STANDS: 27.75" W x 17.75" D x 42" H, WEIGHT: 72 LBS.
19	GREASE PISTON PUMP PACKAGE, PART OF VEHICLE FLUID DISPENSING SYSTEM	GREASE PISTON PUMP PACKAGE, #1151-006 BY BALCRACK, 400 LB STATIONARY SYSTEM (REFER TO NOTES 4 AND 5). REFER TO SPEC. SECTION 112100 FOR ADDITIONAL INFORMATION
20	ENGINE OIL TANK PACKAGE, PART OF VEHICLE FLUID DISPENSING SYSTEM	400 GALLON DOUBLE WALL TANK PACKAGE, #1135-029 BY BALCRACK (REFER TO NOTES 4 AND 5). REFER TO SPEC. SECTION 112100 FOR ADDITIONAL INFORMATION
21	TRANSMISSION FLUID TANK PACKAGE, PART OF VEHICLE FLUID DISPENSING SYSTEM	275 GALLON DOUBLE WALL TANK PACKAGE, #1151-017 BY BALCRACK (REFER TO NOTES 4 AND 5). REFER TO SPEC. SECTION 112100 FOR ADDITIONAL INFORMATION
22	HANGING SCALE	DIGITAL HANGING SCALE CCI HS-6
23	SINK AND COUNTER	CUSTOM STAINLESS STEEL COUNTER AND INTEGRAL SINK PER SPECIFICATION SECTIONS 123570 AND 123553.13
24	WALL MOUNT TV	55" CLASS 4K ULTRA HD, HDR SMART QLED WALL MOUNT TV WITH COMPATIBLE WALL MOUNT BRACKET (WMM-M12EB/ZA)

NOTES:

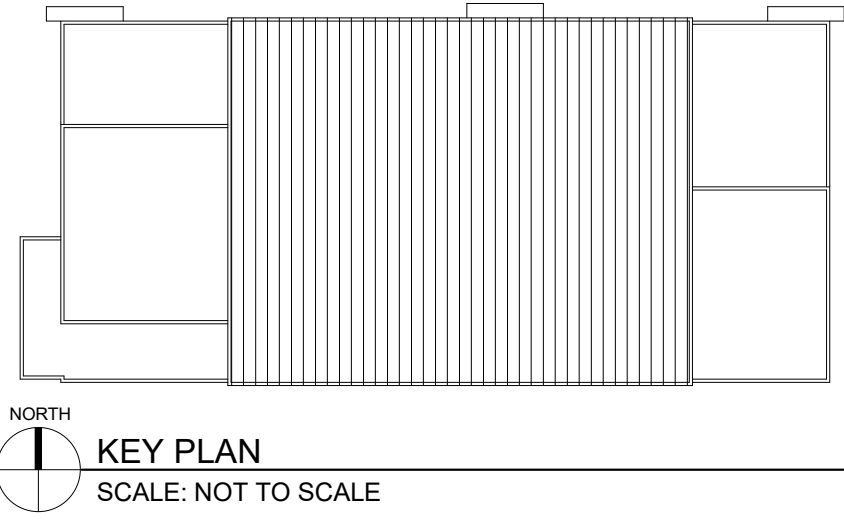
- ALL EQUIPMENT PROVIDED BY CONTRACTOR.
- CONTRACTOR TO LOCATE/MOUNT EQUIPMENT PER OWNERS DIRECTION.
- EQUIPMENT LOCATIONS ARE FOR REFERENCE ONLY.
- CONTRACTOR TO PROVIDE DISPENSING SYSTEMS FOR ENGINE OIL, TRANSMISSION FLUID, GREASE, AIR COMPRESSOR AND WATER. PROVIDE ALL COMPONENTS INCLUDING, BUT NOT LIMITED TO ALL HOSES, PIPING, MOUNTING HARDWARE, COUPLERS, NOZZLES, HANDLES, REELS, AS REQUIRED FOR A COMPLETE SYSTEM. NO EXCEPTIONS. REFER TO SPECIFICATION SECTION 112100 FOR ADDITIONAL INFORMATION.
- COORDINATE ALL WORK WITH MECHANICAL, ELECTRICAL AND PLUMBING DRAWINGS.



EQUIPMENT SCHEDULE		
KEYNOTE	EQUIPMENT	MANUFACTURES AND MODEL
6	PALLET RACKING	HEAVY DUTY ONE PIECE 13 GAUGE STEEL UPRIGHTS WITH 2" ALLOWABLE HEIGHT ADJUSTMENTS AT 2" INCREMENTS. HIGH STRENGTH 15 GAUGE STEEL BEAMS WITH STEP BEAM DESIGN THAT ACCOMMODATES CROSS BARS AND DECKING. FLOOR WELDED BRACE. 12 GAUGE WELDED BASE PLATE ANCHORS. FINISH EPOXY FINISH; COLOR: TBD. BASIS OF DESIND - GLOBAL INDUSTRIAL , MODEL # 796600, WITH 6 LEVELS OF RACKS.
8	VEHICLE LIFT	SPOA10 TRIO. TWO-POST LIFT SERIES. 10,000LBS. CAPACITY. ASYMMETRICAL ROTATED COLUMN DESIGN, 3-STAGE ARMS.
9	VEHICLE LIFT	SPOA10 TRIO. TWO-POST LIFT SERIES. 10,000LBS. CAPACITY. ASYMMETRICAL ROTATED COLUMN DESIGN, 3-STAGE ARMS.
10	VEHICLE LIFT	MOHAWK LIFT MODEL TP-16 16,000LBS. CAPACITY. HEAVY DUTY SERVICE. DO NOT USE HEIGHT RESTRICTIVE OVERHEAD CABLE COVERS THAT LIMIT LIFTING HEIGHT.
11	VEHICLE LIFT	MOHAWK TR-25 4 POST LIFT; 25,000 LBS CAPACITY, WITH SET OF TWO (2) ROLLING HYDRAULIC JACKING BEAMS WITH 25,000 LBS CAPACITY.
12	PRESSURE WASHER	HG SERIES: HOT WATER - NATURAL GAS/LP – BELT DRIVE. MODEL HG-3004-3208. DIMENSIONS: 56.5" L x 29" W x 49.75" H.
13	TIRE RACK	TIRE RACKS - HEAVY DUTY TIRE RACK TO BE ATTACHED TO WALL, WITH HEAVY DUTY 12 GAUGE BEAM CONNECTORS, 3 HOOKS AT EACH END, 14 GAUGE UPRIGHTS MEASURING 1'-3/4" X 1'-3/4". FINISH - GRAY POWDER COAT. BASIS OF DESIGN: GLOBAL INDUSTRIAL MODEL # 613139
14	TIRE CHANGER	COATS, RC SERIES, MODEL #RC-55.
15	WHEEL BALANCER	COATS 1250 SERIES 3D. 57" W x 50" D. WEIGHT: 680LBS.
16	COMPRESSOR	FIXED SPEED ROTATORY SCREW COMPRESSORS. INGERSOLL RAND. AIR SYSTEM: UP6-STAS-150. BASE PLATE AND RECEIVER MOUNTED UNITS: 80 GALLON RECEIVER TANK: 70.2" L x 29" W x 56.6" H.
17	LUBRICANT TANK	BY OWNER
18	OIL FILTER CRUSHERS	RP-20FC RANGER. PNEUMATIC OIL FILTER CRUSHER, 10 TON CAPACITY. 17" W x 17" D x 29.5" H. WEIGHT: 228LBS. INCLUDES STANDS: 27.75" W x 17.75" D x 42" H. WEIGHT: 72 LBS.
19	GREASE PISTON PUMP PACKAGE, PART OF VEHICLE FLUID DISPENSING SYSTEM	GREASE PISTON PUMP PACKAGE, #1151-006 BY BALCRACK, 400 LB STATIONARY SYSTEM (REFER TO NOTES 4 AND 5). REFER TO SPEC. SECTION 112100 FOR ADDITIONAL INFORMATION
20	ENGINE OIL TANK PACKAGE, PART OF VEHICLE FLUID DISPENSING SYSTEM	400 GALLON DOUBLE WALL TANK PACKAGE, #1135-029 BY BALCRACK (REFER TO NOTES 4 AND 5). REFER TO SPEC. SECTION 112100 FOR ADDITIONAL INFORMATION
21	TRANSMISSION FLUID TANK PACKAGE, PART OF VEHICLE FLUID DISPENSING SYSTEM	275 GALLON DOUBLE WALL TANK PACKAGE, #1151-017 BY BALCRACK (REFER TO NOTES 4 AND 5). REFER TO SPEC. SECTION 112100 FOR ADDITIONAL INFORMATION

NOTES:

- ALL EQUIPMENT PROVIDED BY CONTRACTOR.
- CONTRACTOR TO LOCATE/MOUNT EQUIPMENT PER OWNERS DIRECTION.
- EQUIPMENT LOCATIONS ARE FOR REFERENCE ONLY.
- CONTRACTOR TO PROVIDE DISPENSING SYSTEMS FOR ENGINE OIL, TRANSMISSION FLUID, GREASE, AIR COMPRESSOR AND WATER. PROVIDE ALL COMPONENTS INCLUDING, BUT NOT LIMITED TO ALL HOSES, PIPING, MOUNTING HARDWARE, COUPLERS, NOZZLES, HANDLES, REELS, AS REQUIRED FOR A COMPLETE SYSTEM. NO EXCEPTIONS. REFER TO SPECIFICATION SECTION 112100 FOR ADDITIONAL INFORMATION.
- COORDINATE ALL WORK WITH MECHANICAL, ELECTRICAL AND PLUMBING DRAWINGS.



RFI AND RESPONSE LOG

RFI NO.	CONTRACTOR	CONTRACTOR'S QUESTION	DRAWING REFERENCE	SPEC REFERENCE	DATE REC'D.	DISCIPLINE	DATE RETURNED	RESPONSE
1	FQC Construction Management	We may be interested in submitting our bid for card access portion of this project, but the bid documents do not include any specifications in Division 28 for access control. Please clarify with Owner / Architect if this is a design-build project or if there are (or will be) any requirements for a brand-name specific product and model.		281500 (New section added herewith)	12.17.19	Electrical	12.30.19	Specification section 281500 added
2	FQC Construction Management	Address Plaque: 8" x 16" x 1/4" Cast Aluminum Plaque; Mill finished raised areas; travertine background; Beveled border; concealed mount; [Manufacturer: Gemini]  Specs and drawings differ on details of border, background finish and mounting methods of both plaques	5/A8.12		12.17.19	Arch	12.30.19	Background finish, border and mounting method to match drawings. Text: TBD Quantity: 1
3	FQC Construction Management	Aluminum Plaque: 36" x 24" x 1/4" Cast Aluminum Plaque; Mill finished raised areas; travertine background; Beveled border; concealed mount; [Manufacturer: Gemini]  Specs and drawings differ on details of border, background finish and mounting methods of both plaques	4/A8.12		12.17.19	Arch	12.30.19	Background finish, border and mounting method to match drawings. Text: TBD Quantity: 1

# RFI AND RESPONSE LOG

RFI NO.	CONTRACTOR	CONTRACTOR'S QUESTION	DRAWING REFERENCE	SPEC REFERENCE	DATE REC'D.	DISCIPLINE	DATE RETURNED	RESPONSE
4	FQC Construction Management	Halo Lit Fabricated Letters, Clear Anodized finish; Arial Bold font; projected stud mount.  Are the Halo Lit letters the same as the ASI Fabricated Letters or different?	1/A5.1, 2/A5.1, 3/A5.1 and 2/A5.2	101419 and 104300	12.17.19	Arch	12.30.19	<p><u>Canopy Letters</u> - Dimensional Letter Signage over all canopies on North Side as shown on 1/A5.1, 2/A5.1, and 3/A5.1 is per specification section 101419 Dimensional Letter Signage – 2.2 Dimensional Characters, sub section: A. Fabricated Channel Characters &lt;DL-01&gt; with Characters Height: 14” high and text as shown on the drawings and as follows: SHERIFF, FACILITIES MANAGEMENT and CORONER; Fastening method: Freestanding with concealed base bracket assembly</p> <p><u>Building Letters and Logo</u> - Dimensional Letter Signage over precast panel on North Side as shown on 3/A5.1 between grid lines D and F is per specification section 101419 Dimensional Letter Signage – 2.2 Dimensional Characters, sub section: B. Fabricated Channel Characters &lt;DL-02&gt; with Characters Height: 36” high for letters spelled as “KANE COUNTY” and 14” high for letter spelled as “MULTI USE FACILITY”; Client Logo size: 2'-5" diameter; Fastening method: Projecting studs</p> <p><u>Vinyl Cut Letters and Logo</u> - Dimensional Signage Letters on precast panel on the South Side as shown on 2/A5.2 between grid B.9 and D is per specification section 104300, Digitally cut Vinyl Letters adhered to the surface with pressure sensitive adhesive; Characters height: 36” high for letters spelled as “KANE COUNTY”. Client Logo – digitally cut vinyl logo, adhered with pressure sensitive adhesive; Logo size: 12'-0” Diamater</p>
5	FQC Construction Management	4" x 4" x 1/8" thick MP Plastic Room ID signs; tape mount; EVERY ROOM, Specs mentions "Refer to signage schedule and drawings for sizes, locations and layout of signage types, sign text copy and graphics" there is no sign schedule		101423.16	12.17.19	Arch	12.30.19	G.C. to provide room signs for every room. Room names and numbers to match floor plan.
6	FQC Construction Management	Fabricated Letters by ASI LTV series Digitally cut vinyl letters. Fabricated Logo as above; Are the ASI LTV letters just vinyl? Or are they face lit fabricated letters with digitally printed vinyl? Or something else altogether?		104300	12.17.19	Arch	12.30.19	Refer to response in item #4



# RFI AND RESPONSE LOG

RFI NO.	CONTRACTOR	CONTRACTOR'S QUESTION	DRAWING REFERENCE	SPEC REFERENCE	DATE REC'D.	DISCIPLINE	DATE RETURNED	RESPONSE
7	FQC Construction Management	Who is providing the Salt Dome, Storage Bins, and Fueling Station, are these all being provided by the Owner, what if any is required by the general contractor?		112100 - Revised and included herewith	12.17.19	Arch	12.30.19, 01.06.20 (Storage Bins) and 01.07.20 (Fuel Station)	<p><u>Salt Dome:</u> To be provided by G.C. MFR: Dome Corp of North America; Dome Size: 32'-0" Dia; Dome Floor Area: 824 SF; Product Height: 22'-0", Dome Height: 36'-4"; Dome Capacity 502 U.S. Tons (465 Cu. Yards)</p> <p><u>Storage Bins:</u> Provide 2'x2'x6' pre-cast concrete retaining interlocking blocks @ 3'-0" high around storage bins. Basis of Design Manufacturer: Graves Concrete; GC encouraged to find a local supplier for "concrete gravity retaining walls".</p> <p><u>Fuel Station:</u> Refer to Division 112100, sub-section 2.1 Equipment, Item Z Fuel Station Equipment</p>
8	FQC Construction Management	Qty (01) plaque: 8" x 16" x 1/4" Cast Aluminum "2021"  Qty (01) plaque: 24" x 36" x 1/4" Cast Aluminum, unknown text  Room ID at every door minimum 4" x 4" x 1/8" MP Plastic signs (am I supposed to come up with a signage series and schedule using floor plans?)  I don't know which spec goes with what drawing for the following: * Fabricated Letters and Logos by ASI * Halo Lit Letters * Fabricated Letters  Will this include tactile exit signs, Window signs for changeable copy, Permanent room ID, And Restroom signage?			12.17.19	Arch	12.30.19	Refer to response in item # 2, #3, #4 and #5. provide tactile exit signs at all exterior access doors as required (exclude Overhead Doors). No window signs required.
9	FQC Construction Management / CCI Flooring Inc.	I have a quick question regarding the actual project. Room C101 waiting area has LVT as floor designation with EPX-1 as the base. Do they really want epoxy cove base with the lvt or was this a typo.	A9.11		12.18.19	Arch	12.30.19	Wall Base in Room C101 shall be RB-1; Refer to Finish Material Legend on A9.11 for further information on RB-1.

## RFI AND RESPONSE LOG

RFI NO.	CONTRACTOR	CONTRACTOR'S QUESTION	DRAWING REFERENCE	SPEC REFERENCE	DATE REC'D.	DISCIPLINE	DATE RETURNED	RESPONSE
10	FQC Construction Management / CCI Flooring Inc.	Looking at the epoxy flooring. Will we need to figure epoxy on the floor of the shower and will this require us to pitch the epoxy? The plumbing details show that there is a trench drain going in the shower I believe the notation was TR2. This is what is making me think we will need to pitch those areas. The plans are pretty vague giving details.			12.18.19	Arch	12.30.19	Floor Finish – EPX-1 as listed on the Floor Finish Schedule; Refer to Finish Material Legend on A9.11 for further information on EPX-1.  Drain - Showers to receive drain TR-02 as scheduled on P2.0A and per Plumbing Fixture Schedule  Shower Floor shall be pitched to the drain to maintain accessible slope requirements, per applicable Illinois Accessibility Code.
11	Interstate Electronic Company	I would like the opportunity to bid the fire alarm for this project using Autocall FA by Johnson Controls. It is basically a Simplex System for JCI and is non-proprietary.		283111, Section 2.3	12.18.19	Electrical	12.30.19 and 01.06.20	Division 283111 Section 2.3 Fire Alarm Control Unit  1). Manufacturer item #1 is modified from “Honeywell Brands (Notifier/Fire-Lite/Silent Knight)” to “Honeywell Brands (Notifier/Fire-Lite/Silent Knight/Gamewell/FCI).  2). 2.Manufacturer item #3 is modified from “Simplex (a Division of Tyco International)” to “Johnson Controls (Simplex, Autocall).”
12	FQC Construction Management	Performance requirements for Freezer/Cooler  Two critical pieces of information relating to the "Prefabricated Cold Storage Rooms" are being requested as part of this RFI.  1. Request that the temperature and, if relevant, humidity, set points for the walk-in cooler (Room C137) and the Walk-in Freezer (Room C136) be provided. Neither the Section 130380 specifications not the Cooler/Freezer Schedule on Drawing M4.1 identify the desired operating temperature/humidity conditions.  2. Requested that the Temperature Uniformity & Humidity Performance requirements outlined in Paragraph 3.3C and 3.3D of the section 130380 specifications be updated/clarified to include desired temperature uniformity requirements (eg. +/- 1° C) and if applicable, acceptable relative humidity range (e.g. +/- 5%)	M4.1 - Cooler / Freezer Schedule	130380 - Paragraph 3.3C and 3.3D	12.19.19	Mechanical/ Arch	Additional Mechanical response will be addressed in Addendum to be issued on 1.13.20	Desired Operating Temperature – * Freezer – (-) 4°F * Cooler – (+) 40° F  Temperature uniformity desired for both Freezer and Cooler – (+/-) 4°F

## RFI AND RESPONSE LOG

RFI NO.	CONTRACTOR	CONTRACTOR'S QUESTION	DRAWING REFERENCE	SPEC REFERENCE	DATE REC'D.	DISCIPLINE	DATE RETURNED	RESPONSE
13	FQC Construction Management	<p>Another question on the far west side is the utility trench behind the curb or in the road. I'm looking at sheet C2.0</p> <p>* Can you verify if the storm piping is in the roadway or behind the curb on the far west side of sheet C2.0, to me it looks to be under the curb?</p> <p>* Looks like we'll need complete curb removal and replacement, is this correct?</p> <p>* Or is the work west of the east ring road not part of this work, maybe existing?</p> <p>* If we are to do the pathing and piping work can you tell us what is existing to match?</p>	C2.0		12.19. 2019	Civil	Civil response will be addressed in future addendum	
14	FQC Construction Management	Can you provided specification of Pavement thickness for the Trash Enclosure Area as well as for the Transformer / generator area onb C2.1	A1.01 (revised and attached herewith) and A1.1A (new sheet - attached herewith)		12.19.19	Arch	12.30.19	Sketch/detail attached. Sheet A1.1A added.
15	ACO	I was hoping to get some information on the 56 LF of external trench drain from the civil pages. According to the plans it says "see detail". However, I'm unable to locate the trench drain detail. Can you please advise what is spec'd?			12.19.19	Civil	Civil response will be addressed in future addendum	
16	ACO	In addition, are you accepting additional manufactures other than what is spec'd for the internal (plumbing) trench drain?			12.19.19	Arch	12.30.19	Provide bid per contract documents.
17	FQC Construction Management	can you please provide specifications regarding the barrier arm gates? Not sure what functions are needed along with who's the existing manufacturer.			12.19.19	Civil	Civil response will be addressed in future addendum	
18	Osman Construction Corporation	There are a few specifications where it is indicated that the contractor shall provide testing. One such specification is steel decking 053100. Is this correct?		053100	12.20.19	Arch	12.30.19	Provide testing per contract documents.
19	Osman Construction Corporation	In specification section 051200 it states that the fabricator and installer need to be AISC certified. Can this requirement for AISC certification be waived?		051200	12.20.19	Arch / Structure	12.30.19	Yes, AISC certification can be waived.



## RFI AND RESPONSE LOG

RFI NO.	CONTRACTOR	CONTRACTOR'S QUESTION	DRAWING REFERENCE	SPEC REFERENCE	DATE REC'D.	DISCIPLINE	DATE RETURNED	RESPONSE
20	Osman Construction Corporation	In specification section 280500 there is no equipment identified. Is the access control and security system equipment furnished and installed by owner and we are only to provide conduit and boxes? If we are to provide the equipment is it an open specification or will there be an addendum issued for the equipment specification.		280500 (new sections - included herewith)	12.20.19	Electrical	12.30.19	Division 281500 Access Control – Included herewith
21	L.J Morse	I would need more information about Exterior characters and logos on A5.1 and A5.2.  Dimensional Lettering -- I am seeing what appears to be dimensional lettering on Plan Sheets A5.1 & A5.2 in the form of lettering mounted to the top of 3 canopies and grand-scale lettering & logos attached to the front of the building in 2 places. None have any measurements and no indication on which are DL-1 and which are DL-2. Please advise.	A5.1 and A5.2		12.20.19 12.23.19	Arch	12.30.19	Refer to response for items # 2, #3 and #4
22	L.J Morse	Also, could you please provide an interior signage schedule.  Panel Signage -- The specs give a little info on substrate but the only dimensions I see are "min 4" x 4". There is not enough information to determine exactly how the architect envisions the signs. Can we get a little more detail on what they are planning? Are we to match what is installed in the existing part of the building? If so, can we get images of these pieces? We are happy to develop signage details and schedules, but that is usually done by consulting fee or as part of a contracted job. If the architect will provide a little more info, I am happy to do estimating take-offs.		101423.16	12.20.19 12.23.19	Arch	12.30.19	Refer to item #5; Size: 6" x 8"
23	Vissering Construction Company	There are 2 spec sections numbered 075423 in the Spec Book. Is one or the other not supposed to be in there, or is there supposed to be 2 with that number, but different kind of roofing?		075423	12.23.19	Arch	12.30.19	Polyvinyl-Chloride (PVC) with (KEE) Roofing shall be Division 075419 instead of 075423.  Thermoplastic Polyolefin (TPO) Roofing shall be Division 075423 and is listed correctly.
24	Osman Construction Corporation	Spec section 033543 Polished Concrete is in the spec book but not indicated in any of the rooms on the room finish schedule sheet A 9.11. Should this be at the flooring surfaces identified as sealed concrete?	A2.1B, A9.11 and A9.12	099600 and 033543 Polished Concrete (Division removed)	12.23.19	Arch	12.30.19 and 01.06.20	Rooms S152, S153, S162 and S163 to receive High Performance Coating per Division 099600 High Performance Coatings. All other rooms to receive sealed concrete per Division 099123 Interior Painting
25	Osman Construction Corporation	Primex clock system is specified in section 275313, but there aren't any designations on the drawing for clock locations. Can you provide the clock locations?		275313	12.23.19	Arch	12.30.19	Clock System: Provide 12 single face clocks to be placed as directed by client.
26	L.J Morse	Plaques -- There is enough info in the specs and Plan Sheet A8.12 for us to provide a quote for the two plaques that appear to be in this project (building number and dedication plaque). Please confirm that this is all they need.	A8.12		12.23.19	Arch	12.30.19	Refer to response for item # 2, and #3

## RFI AND RESPONSE LOG

RFI NO.	CONTRACTOR	CONTRACTOR'S QUESTION	DRAWING REFERENCE	SPEC REFERENCE	DATE REC'D.	DISCIPLINE	DATE RETURNED	RESPONSE
27	L.J Morse	Per Specs:  4. General Coordination procedures a. Coordinating Contractor shall retain a third-party consultant specializing in building Information Model generation and coordination and shall perform three-dimensional...  Are we responsible for hiring the BIM contractor? If so, please confirm what discipline do you need, HVAC? Plumbing? Electrical?		013100	12.23.19	Arch	12.30.19	The G.C. is responsible for retaining the BIM generation and coordination consultant for all critical building systems as per LOD level 350 as defined by bimforum.org
28	Vissering Construction Company	Table of Contents says 221123 -Domestic Water Pumps  Spec included says 221123B (not in table of contents) Domestic Water Booster Pumps  Table of Contents says 221123A Domestic Water Circulation Pumps (does not appear to be included in the spec.).  Please Clarify		221123, 221123B and 221123A	12.23.19	Plumbing	Will be addressed in the addendum to be issued on 1.13.20	
29	Scheffler Electric Corp.	after looking through the lighting plans. There are two fixtures on the drawing that are not on the schedule F4S and F14. Please provide a spec.			12.23.19	Electrical	Will be addressed in the addendum to be issued on 1.13.20	
30	Vissering Construction Company	Table of Contents – 235523.13 – Low Intensity Gas Fired Radiant Heaters. This spec section does not appear to be in the spec book.		235523.13	12.23.19	Mechanical	Will be addressed in the addendum to be issued on 1.13.20	
31	Vissering Construction Company	Spec book contains – 260573.13 – Short Circuit Studies - Not listed in table of contents. Should this be included?		260573.13	12.23.19	Electrical	Will be addressed in the addendum to be issued on 1.13.20	
32	Vissering Construction Company	DRAWINGS:  C5.3 is in the set, not in the index E4.7 is in the index, not in the set E4.7A is in the set, not in the index E4.7B is in the set, not in the index E4.7C is in the set, not in the index.			12.23.19	Arch	12.30.19	This is correct

## RFI AND RESPONSE LOG

RFI NO.	CONTRACTOR	CONTRACTOR'S QUESTION	DRAWING REFERENCE	SPEC REFERENCE	DATE REC'D.	DISCIPLINE	DATE RETURNED	RESPONSE
33	Accurate Glass, Inc.	RFI regarding glass & glazing: Please clarify frame type C-3. Is this frame to be hollow metal as shown on the door schedule or aluminum with a hollow metal doors as shown at detail 11/A9.3 and storefront elevations on sheet 9/A9.2. Please advise.	11/A9.3 and 9/A9.2		12.23.19	Arch	12.30.19	Frame Type C-3 to be hollow metal frame with a hollow metal door. Door and frame elevations to remain. Frame, Door and Hardware schedule will be revised in future addendum.
34	Mill Concrete Construction	After reviewing the plans I believe there may be a page missing.  I need the existing grades east of the existing building where the new building and roads are going. The proposed grading on C4.0 & C4.1 have white space covering the existing grades, and I don't believe the existing grades I need to calculate cut & fill quantities are on C1.0-C1.2A either.	C4.0, C4.1, C1.0 thru C1.2A		12.24.19	Civil	Civil response will be addressed in future addendum	
35	L.J. Morse Construction	The architect has not selected styles for the ceramic tile, LVT, or carpet tile. They have only listed the manufacturer and sizes of these products.  In order to price the job we will need the styles of all of these products. I will assume this information will be coming out in an addenda.		093013, 096723 and 096813 - revised and attached herewith	12.24.19	Arch	12.3.019	093013, 096723 and 096813 - revised and attached herewith
36	CKI, Inc.	Spec 101419 ,1.2 A—which letters are illuminate? Which are not? Appears to be at least 4 sets of letters in question. What are the sizes? Not shown on prints. Spec 101423 .  Cannot locate a signage schedule, or a detail sheet identifying sign types and sizes. Please advise as to all details for interiors.		101419 and 101423	12.24.19	Arch	12.30.19	Refer to response for item # 4 and #5
37	CKI, Inc.	Print A5.1 Letters on canopy. Factory recommends tie backs for bottom mounted letters. They are not shown in any of the details.  If it is insisted there be no tie backs, manufacturers will not warranty. If they don't warranty, we cannot warranty. How will this be handled?			12.24.19	Arch	12.30.19	Provide bid per contract documents.
38	CKI, Inc.	Spec 101423 2.4 installation call out both mechanical fasteners and 2 sided tape. Which is correct? Cannot be both.		101423	12.24.19	Arch	12.30.19	Mount signs with 2 sided tape
39	CKI, Inc.	Print A5.1 detail 4- plaque next to letters Kane . What is it? Material, thickness, height?			12.24.19	Arch	12.30.19	Refer to response for item #4
40	CKI, Inc.	Print A 5.2 detail 2- County seal. What is it? Size, height & thickness? Material? Desired mounting method? Bricks show through on the drawings.  Are all the plaque details individual pieces or is the plaque supposed to be 1 solid piece?			12.24.19	Arch	12.30.21	Refer to item #4. Client Logo is one solid piece
41	CKI, Inc.	Spec 101423 interior signage. – there is no signage schedule listed. Nor is there a sheet identifying sign type, sign sizes. Please advise where this detail can be located.		101423	12.24.19	Arch	12.30.219	Refer to item #5

## RFI AND RESPONSE LOG

RFI NO.	CONTRACTOR	CONTRACTOR'S QUESTION	DRAWING REFERENCE	SPEC REFERENCE	DATE REC'D.	DISCIPLINE	DATE RETURNED	RESPONSE
42	The George Sollitt Construction Co.	The project documents do not contain any Site Work specifications such as earthwork, site utilities, site paving, etc.  Will any specifications be provided for the site work required on this project?			12.26.19	Civil	Civil response will be addressed in future addendum	
43	L.J. Morse Construction	The drawing A2.2A shows North and East partitions in the Boiler room as a drywall partitions. This is the walls with doors S201A and S201B. Please clarify type of this partitions.	A2.2A		12.27.19	Arch	12.30.19	This wall type is correct
44	Osman Construction Corporation	On sheet A 2.11 wall partition type E-3 calls for insulated CMU 8", 10". What type of insulation is to be used?	A2.11	042200 - revised and included herewith	12.27.19	Arch	12.30.19	Division 042200 - revised and included herewith
45	F.H. Paschen	Drawings A6.15 detail 4 show the canopy that is above the OHD and refers to detail 7/A6.22. The other canopies on drawings A6.12 and A6.11 don't have a detail. Would they follow the same detail on 7/A6.22?	A6.15, 7/A6.22, A6.12 and A6.11		12.27.19	Arch	12.30.19	Detail on 7/A6.22 is a typical canopy detail applicable to canopies at all locations
46	F.H. Paschen	ACM panels are missing their specification. What type of ACM is needed?		074213.23 - new section; included herewith	12.27.19	Arch	12.30.19	Division 074213.23 Metal Composite Material Wall panels - included herewith
47	F.H. Paschen	Finish Schedule on A9.11 and Wall Finish Plan on A9.14A references Ceramic Tile CT-3 which is not listed on the Finish Material Legend. Please provide specifications for this tile type.	A9.11 (revised and included herewith) and A9.14A	093013 - revised and included herewith	12.27.19	Arch	12.30.19	CT-3 not used. Room C11221 and C126 shall receive CT-1. Refer to revised specification section 093013 - attached herewith
48	F.H. Paschen	Spec Section 112100 Building Equipment section 2.1D equipment tag D, more information is required for the Mettler Toledo floor scale. Please provide a specific model number required for bid.		112100, sub-section 2.1D	12.27.19	Arch	12.30.19	Model # 2256 VLP Stainless Steel; Capacity: 2,500 lbs, Finish: 304 Smooth SS
49	F.H. Paschen	The equipment schedule on drawing A10.1B, keynote 12, lists two Mi-T-N models of pressure washers. The two models have different electrical voltage requirements. The electrical equipment schedule on E4.4 shows both power washers having the same electrical requirements. Please clarify which model is correct.	A10.1B (revised and included herewith) and E4.4		12.27.19	Arch / KC	12.30.19	Model # HG-3004-3208
50	F.H. Paschen	The project manual didn't include a specification for the countertops. What type of countertop, how thick, and what kind of edges?			12.27.19	Arch	12.30.19	Refer to Contract Documents.
51	F.H. Paschen	SS-1 is missing in the finish schedule. What type of countertop is SS-1?		123616	12.27.19	Arch	12.30.19	Refer to following specification section: 123616 Metal Countertops
52	F.H. Paschen	Per the Glazing Schedule on Sheet A9.2, glass type MG-1 is to be ½" clear tempered glass. Glazing Spec 088000 Section 3.6A lists this same glass type as 6mm (i.e. ¼") clear annealed glass. Please confirm required glass type/specifications for MG-1.	A9.2	088000, sub-section 3.6A	12.27.19	Arch	12.30.19	Revise MG-1 glass thickness to 1/4" tempered glass

## RFI AND RESPONSE LOG

RFI NO.	CONTRACTOR	CONTRACTOR'S QUESTION	DRAWING REFERENCE	SPEC REFERENCE	DATE REC'D.	DISCIPLINE	DATE RETURNED	RESPONSE
53	F.H. Paschen	Please confirm specifications for glass type IG-2 as it is not listed in Glazing Spec 088000.		088000	12.27.19	Arch	12.30.19	IG-2 - Full Vision Insulated Tempered Glazing at overhead doors, as per manufacturer specifications
54	F.H. Paschen	Glazing Specification 088000 Section 3.6B calls out glass type MG-2 though it is not listed on the Glazing Schedule and we can't seem to find this in the drawings. Please clarify where this glass type is to be used		088000, sub-section 3.6B	12.27.19	Arch	12.30.19	MG-2 is not used
55	F.H. Paschen	Per Sheet A7.27 Det. 2 & 5 we are to provide safety glass panels to protect the TV's in the Autopsy room. Please provide specifications on what glass type is to be used for these locations.	2 and 5 / A7.27	088000, sub-section 3.6A	12.27.19	Arch	12.30.19	Use glazing type MG-1
56	F.H. Paschen	Please confirm material for frame type C4. Should it be hollow metal or aluminum?			12.27.19	Arch	12.30.19	Frame Type C4 is hollow metal
57	F.H. Paschen	Frame type C3 is identified as hollow metal with hollow metal doors on Door Schedule but on elevations/details (Sheets 6.13/4, 6.14/3, & 6.15/2) it is shown as aluminum storefront. Please clarify materials.	4/A6.13, 3/A6.14 and 2/A6.15		12.27.19	Arch	12.30.19	Frame Type C-3 to be hollow metal frame with a hollow metal door. Door and frame elevations to remain. Frame, Door and Hardware schedule will be revised in future addendum.
58	F.H. Paschen	For Aluminum Storefront frame type A please confirm, is there an operable awning or vent as called out on detail 1/A6.11?	1/A6.11		12.27.19	Arch	12.30.19	This is a typo; the note shall read as "Thermally broken aluminum storefront"
59	F.H. Paschen	Are we required to use the old construction entrance off Peck Road (marked in red) or can we use the main entrance road off Route 38 for construction traffic (marked in blue)? See the attached sketch.			12.27.19	Arch	12.30.19	The contractors shall use either the existing construction access road off of Bircher or they can build a new access road as shown on the civil drawings for the optional stormwater basin expansion Alternate. No construction access shall use the government campus access roads without approval from the owner and architect.
60	Kewaunee Scientific Corporation	The attached work table is shown on sheet A8.12, but it's not shown on the floor plans. Can you please confirm on how many instances this work table occurs.	1, 2 and 3 / A8.12		12.27.19	Arch	12.30.19	Work Table to be located in Work Area F165, excat location TBD. Quantity: 1, refer to E2.1C
61	L.J.Morse	Specification 0951113 calling for AP-1-Tectum 1"x48"x96" direct attached panels. I don't see it on Reflected Ceiling plans or interior elevations. Please clarify if it is any on this project.		095113	12.27.19	Arch	12.30.19	Tectum panels are to be provided In lieu of Acoustical roof deck in areas indicated in Deduct Alternate 6 in Division 012300 Alternates, sub-setion 3.1, E.2



## RFI AND RESPONSE LOG

RFI NO.	CONTRACTOR	CONTRACTOR'S QUESTION	DRAWING REFERENCE	SPEC REFERENCE	DATE REC'D.	DISCIPLINE	DATE RETURNED	RESPONSE
62	Camosy Construction	<p>1). Frame type C-3. Is this frame to be hollow metal as shown on the door schedule or aluminum with a hollow metal door as shown at detail 11/A9.3 and storefront elevations on sheet 9/A9.2. Please advise.</p> <p>2). Glass type MG-1 call for ½” clear tempered glass as shown on the glazing schedule on sheet A9.2. The specification 088000 item 3.6/A calls for MG-1 to be ¼” clear glass. Please clarify.</p> <p>3). Glass type IG-2 shown on the glazing schedule sheet A9.2 calls for 1-1/16” tempered insulating glass. The glazing specification does not list glass type IG-2. Please advise.</p> <p>4). Is all of the glass type IG-1 to be Green tinted. Please advise.</p>			12.30.19	Arch	01.06.20	<p>1). Refer to item #57 in this RFI Log addressed in Addendum #2, issued on 12.30.19</p> <p>2). Refer to item #52 in this RFI Log addressed in Addendum #2, issued on 12.30.19</p> <p>3). Refer to item #53 in this RFI Log addressed in Addendum #2, issued on 12.30.19</p> <p>4). Refer to contract documents</p>
63	Mechanical Inc.	<p>1). Sheet M2.1A, Supply ductwork for DOAS-2W, note 3 states double wall duct, note 9 states 14 gage back to fan. Am I to use 14 gage double wall? 14 gage for both the inner and outer shells?</p> <p>2). Sheet M2.1A, Exhaust double wall ductwork for Exhaust Fan EF-135. Is the listed size for the outer shell? Is this duct to be 14 gage? The stainless steel material for the drop is only back to the main?</p> <p>3). Sheet M2.1A, Exhaust double wall ductwork for ERU-W. Is the listed size for the outer shell? Is all of this duct to be 14 gage, or only after the silencer up to equipment? The stainless steel material for the drop is only back to the main?</p> <p>4) Sheet M2.1A, Supply double wall ductwork for DOAS-1W. Is the listed size for the outer shell? Is all of this duct to be 14 gage, or only after the silencer up to unit? The stainless steel material for the drop is only back to the main?</p> <p>5) Sheet M2.1A, The 30” x 20” double wall supply ductwork in corridor. Are the runouts to the VAV Boxes to be double wall construction? Low pressure ductwork 1-1/2” liner?</p> <p>6) Sheet M2.1B Exhaust ductwork for Exhaust Fans VEF-162, 164. Is this 316 stainless steel duct to be flanged? Welded?</p> <p>7) Sheet M2.1C, double wall supply ductwork, Are the runouts to the VAV Boxes to be double wall construction? Low pressure ductwork 1-1/2” liner?</p>			12.30.19	Mechanical	Will be addressed in the addendum to be issued on 1.13.20	

## RFI AND RESPONSE LOG

RFI NO.	CONTRACTOR	CONTRACTOR'S QUESTION	DRAWING REFERENCE	SPEC REFERENCE	DATE REC'D.	DISCIPLINE	DATE RETURNED	RESPONSE
64	HTI Polymer Inc.	<p>I have request for clarification on the EPX-1 and EPX-2.</p> <p>1). The room schedule calls for cove in room C101 waiting area base. The floor is not EPX-1 or EPX-2. Please clarify base material for that room and or floor material.</p> <p>2). The GP Sherwin Williams Aqua Armor has an inherent water vapor barrier in the primer. Is this acceptable for the MVE system necessary.</p> <p>3). Please confirm 4" cove.</p> <p>4). Please clarify : No field fabrication of joints allowed, including out-of-plumb / level butt joints. Does this mean that the EPX-1 and EPX-2 system need to be free from honoring control and construction joints on the surface. Typically , HTI honors the control joints and construction joints and then will honor them in the surface of the EPX-1 and EPX-2 flooring then seal with RS88 joint sealant in the color of choice. We can utilize a different method but would not know for certain how to cost until the concrete is poured and all cracks/joints are accounted for prior to installation of EPX-1 and EPX-2.</p> <p>5). Please specify what chemicals will be present for cleaning/storage/etc. in the facility in areas that EPX-1 and EPX-2 are subjected to. This is especially critical for the hazmat area/aux autopsy room.</p>			12.30.19	Arch	01.06.20	<p>1). Refer to item #09 in this RFI Log addressed in Addendum #2, issued on 12.30.19</p> <p>2). Provide bid per contract documents.</p> <p>3). Confirmed.</p> <p>4). Field fabrication of joints will be allowed.</p> <p>5). At this time it is unknown what cleaning chemicals will be used by owner other than a bleach/water solution.</p>
65	Midwest Masonry, Inc.	Drawings indicate two types of "thin brick veneer".Does the AOR have specific installation requirements as this can vary with manufacturer?Ni info in the unit masonry spec.			12.30.19	Arch	01.06.20	Brick is integral to precast panel per contract documents.
66	Lite Construction, Inc.	I have a steel subcontractor asking if the AISC certified plant can be waived for the Kane County Multi-Use Facility project? Please let me know. Thank you			12.30.19	Structure	01.06.20	Refer to item #19 in this RFI Log addressed in Addendum #2, issued on 12.30.19

## RFI AND RESPONSE LOG

RFI NO.	CONTRACTOR	CONTRACTOR'S QUESTION	DRAWING REFERENCE	SPEC REFERENCE	DATE REC'D.	DISCIPLINE	DATE RETURNED	RESPONSE
67	R.C. Wegman Construction Company	<p>1). What type of 3" rigid insulation board is to be utilized in the masonry cavity: polyiso or polystyrene?</p> <p>2). Can you please advise color selections on the solid surface material?</p> <p>3). Can the AISC certification requirement be waived? Many Structural Steel Contractors have asked this question. Both RCW and Cordogan Clark have worked with these contractors who would be prohibited from bidding unless this certification is waived.</p> <p>4). The drawings call out for insulated CMU to be utilized, however the specifications don't call out what they are to be insulated with? There is at least 6 different ways to insulate CMU. Please provide clarification.</p> <p>5). Frame type C-3 at (7) exterior locations shows on the door schedule to have hollow metal doors and hollow metal frames. Detail section 2 on A6.15 calls for aluminum frames with hollow metal doors. Question: Is frame aluminum or hollow metal?</p> <p>6). Page A9.2 calls out glass type IG-2 full vision 1- 1/16" insulated tempered glass. It is shown to be in elevation frame types C-3, C-4 and overhead door type OH-1. The glass specification 088000-10 only identifies IG-1 type. Question: What is the make-up of glass type IG-2?</p> <p>7). Page A9.2 calls for glass type MG-1 to be 1/2" clear tempered glass. Glass specification 088000-9 shows MG-1 to be 1/4" clear annealed glass. Question: What type of glass tempered or annealed and what thickness is MG-1 1/4" or 1/2"?</p>			12.30.19	Arch / Structure	01.06.20	<p>1). Polyiso</p> <p>2). Wilsonart - Peace Grey 9232SS</p> <p>3). Refer to item #19 in this RFI Log addressed in Addendum #2, issued on 12.30.19</p> <p>4). Refer to item #44 in this RFI Log addressed in Addendum #2, issued on 12.30.19</p> <p>5). Refer to item #57 in this RFI Log addressed in Addendum #2, issued on 12.30.19</p> <p>6). Refer to item #53 in this RFI Log addressed in Addendum #2, issued on 12.30.19</p> <p>7). Refer to item #52 in this RFI Log addressed in Addendum #2, issued on 12.30.19</p>
68	R.C. Wegman Construction Company	<p>8). Doors C101 and F165 in frame type C-2 are interior doors and frames. The elevations call for glass type IG-1 which is 1" insulated glass. Question: Is the glass 1" insulated or 1/4" thick and if the glass is 1" insulated do the frames need to be thermally broken on the inside of the building?</p> <p>9). Window type A shows two 2" horizontal pieces forming a horizontal 4'-0" up from the bottom of the window. Question: Would it be possible to use one standard 4 1/2" horizontal at this location instead of two pieces which could lead to water leakage?</p> <p>10). Can the online project website hosting platform Basecamp (www.basecamp.com) be used in lieu of Submittal Exchange? The features of both websites are very similar. Basecamp would be free to the owner. The use of Submittal Exchange would add cost to the owner.</p>	A9.2		12.30.20	Arch	01.06.20	<p>8). Yes and Yes</p> <p>9). Yes.</p> <p>10). Only Submittal Exchange will be used as online project hosting platform.</p>



## RFI AND RESPONSE LOG

RFI NO.	CONTRACTOR	CONTRACTOR'S QUESTION	DRAWING REFERENCE	SPEC REFERENCE	DATE REC'D.	DISCIPLINE	DATE RETURNED	RESPONSE
69	Tecnica Environmental Services	Can you please request a civil drawing that provides existing contours east of the match line similar to Sheets C1.0 and C4.0, which are west of the match line.			12.31.19	Civil	Will be addressed in the addendum to be issued on 1.13.20	
70	Osman Construction Corporation	Can you advise if suspended vent and storm piping material is PVC or C.I ? Per Mechanical drawings appear to be plenum return system.			12.31.19	Plumbing	Will be addressed in the addendum to be issued on 1.13.20	
71	HTI Polymer Inc.	1). Resinous flooring basis of design is now Dur-A-Flex Dur-A-Flake epoxy flake. The spec is for Dur-A-Quartz. Addition of Flake instead of quartz is the Dur-A-Flake system. Micro Flex at 0.15 lbs/sf and Macro at 0.1 lbs/sf. Please clarify Dur-A-Flake or Dur-A-Quartz system.			12.31.19	Arch	01.06.20	Intent is for the Dur-A-Quartz product to be used.
72	IHC Construction Company	<p>1). The room schedule calls for cove in room C101 waiting area base. The floor is not EPX-1 or EPX-2. Please clarify base material for that room and or floor material.</p> <p>2). The GP Sherwin Williams Aqua Armor has an inherent water vapor barrier in the primer. Is this acceptable for the MVE system necessary.</p> <p>3). The spec calls for 4" cove but there is a drawing that has 6" cove. Can you confirm 4" or 6" cove?</p> <p>4). Please clarify : No field fabrication of joints allowed, including out-of-plumb / level butt joints. Does this mean that the EPX-1 and EPX-2 system need to be free from honoring control and construction joints on the surface? Typically , HTI honors the control joints and construction joints and then will honor them in the surface of the EPX-1 and EPX-2 flooring then seal with RS88 joint sealant in the color of choice.</p> <p>5). Resinous Flooring Spec per addendum#2 has changed to Dur-A-Flex basis of design The Dur-A-Flex Flake Floor System is micro and macro flake as the aggregate not quartz as indicated on the spec. What is the level of addition of Macro/Micro flake if this is indeed what that are asking for? The system specked out is for the Dur-A-Quartz system. Its a good system just doesn't have decorative flake it has decorative quartz.</p>			12.31.19	Arch	01.06.20	<p>1). Refer to item #09 in this RFI Log addressed in Addendum #2, issued on 12.30.19</p> <p>2). Provide bid per contract documents.</p> <p>3). Cove to be 4 inch high.</p> <p>4). Field fabrication of joints will be allowed.</p> <p>5). Refer to item #71</p>
73	L.J.Morse	Please confirm the acid etched cast stone above the windows is part of the precast panels? My cast people are asking.A5.1 Typical.			01.02.20	Arch		Yes.
74	Osman Construction Corporation	Just to confirm the thin brick is part of the precast panel and is cast in with the panel Correct?			01.02.20	Arch		Yes.

## RFI AND RESPONSE LOG

RFI NO.	CONTRACTOR	CONTRACTOR'S QUESTION	DRAWING REFERENCE	SPEC REFERENCE	DATE REC'D.	DISCIPLINE	DATE RETURNED	RESPONSE
75	IHC Construction Company	Utility connection points are unclear, please clarify. We assume the water is at the pressure connections across street. The storm is all onsite with just 1 lid change at street entrance. The sanitary is unclear, is it in the street which is completed or stubbed up to the drop MH (detail included for that). Existing storm MHs show up on google maps but not the sanitary.			01.02.20	Plumbing / Civil	Will be addressed in the addendum to be issued on 1.13.20	
76	Solitt Construction	Civil drawings marked as "not for construction" shows existing utility lines over at existing Kane County Government Center. It does not apprea that anything is being changed or new work proposed as the cross hatch says the same thing on proposed utility drawings as well.			12.30.19	Civil	Will be addressed in the addendum to be issued on 1.13.20	
77	L.J.Morse	Please check signage scope, below"  1). There are a few remaining RFIs: depths of dimensional logo and lettering; also the shield details on the dimensional logo – do they want this painted? Giclee print applied to face of fabricated logo?  2). Colored Anodized is a significant upcharge; Anodizing large letters is also costly and has considerable lead time – do you want a value engineered option as well? I am waiting on final numbers from my manufacturer			01.03.20	Arch	01.06.20	1). Depth of dimensional letters and logo to be 4 inches throughout. Refer to specifications for finish.
78	L.J.Morse	Depth of Sinage DL-01			01.03.20	Arch	01.06.20	Refer to item #77
79	L.J.Morse	Depth of Halo Lite Signage (Kane County) - DL-02:  1). Letters - KANE COUNTY 2). LetterS - MULTI USE FACILITY 3). 2'-6" CLIENT LOGO			01.03.20	Arch	01.06.20	Refer to item #77
80	L.J.Morse	The Addendum #2-RFI #61 clarify that the Tectum panels per specification 0951113 to be provided for Alternate #6.  The Alternate #6 calling for furnishing and installing Tectum direct-attach ceiling panels attached to the deck.-Series 8175T10-total quantity of 630 panels. The series 8175T10 is 2' x 4' panels so 630 panels will be 5,040 SF. The specification 095113 calling for 4' x 8' panels so 630 panels will be 20,160 SF. Please clarify if we have to provide 630 panels size 2' x 4' or 4' x 8'.			01.03.20	Arch	01.06.20	Alternate is correct. Utilize 2x4 panels NOT 4x8 panels.

## RFI AND RESPONSE LOG

RFI NO.	CONTRACTOR	CONTRACTOR'S QUESTION	DRAWING REFERENCE	SPEC REFERENCE	DATE REC'D.	DISCIPLINE	DATE RETURNED	RESPONSE
81	Dome Corp. of North America	1). Do you have an idea on the wall height you are looking for? Typical, is an 8' wall. But it looks like from the dome height you have, it would need a 12' concrete.  2). Do you have an idea where it is going on the site, so we can take a look at the geo-tech report and see what the foundation requirements would be?  3). Also, I assume you were looking at an asphalt floor? That is what is most common.			01.03.20	Arch	01.06.20	1). Wall height for Salt Dome shall be 12'-0" cast in place concrete.  2). Refer to C2.1 for location  3). Flooring - as specified on Civil drawings
82	L.J.Morse	My question is regarding Sheets C2.0 & C2.1 vs C2.0A & C2.1A . These are both Site Geometric and paving pans but the A depicts alternate work that I just done see ? Please clarify.			01.03.20	Civil	Will be addressed in the addendum to be issued on 1.13.20	
83	Troop Contracting, Inc.	Will the AISC Quality certification for the steel be waived or no?			01.03.20	Structure		Refer to item #19 in this RFI Log addressed in Addendum #2, issued on 12.30.19
84	The Brucker Company	Would it possible for Price Industries to quote the VAV, GRDS and Silencers and Greenheck for the Manual Volume Dampers, Roof Top Units and Make-Up Air Units. We would meet the specification requirements that is specified in each of the sections. If there are additional information we would need to provide to be allowed to bid the specified equipment's?		Division 23		Mechanical	Will be addressed in the addendum to be issued on 1.13.20	
85	IHC Construction Company	Specification Section 281500 issued in Addendum 002 references Section 281300 Access control System Software and Database Management. Please provide specification section 281300.		281500 and 281300	01.03.20	Electrical	Will be addressed in the addendum to be issued on 1.13.20	
86	Autumn Construction Services, Inc.	I have a couple question for the mechanical portion of the project.  1). Hose reel-1 model number (HD78080 OLP) cannot be found. Is that the correct model number?  2). Please provide a detail of how the hose reels are supported in the middle of the room.  3). Will an enlarged plan view be provided to show what equipment the ½" and ¾" is tying into. Also provide an Air Compressor detail.  4). Who is responsible for furnishing and installing the cooler and freezer?  5). Will each gas fired equipment need to have its own gas regulator?			01.03.20	Mechanical	MEP questions #1 thru 3 and #5 will be addressed in the addendum to be issued on 1.13.20	4). G.C. to furnish and install Freezer and Cooler.

RFI AND RESPONSE LOG

RFI NO.	CONTRACTOR	CONTRACTOR'S QUESTION	DRAWING REFERENCE	SPEC REFERENCE	DATE REC'D.	DISCIPLINE	DATE RETURNED	RESPONSE
87	Lite Construction, Inc.	1). Should we only quote Norlake even though kolpak designed this walk in? Project manual states Norlake Scientific Hudson, Wisconsin as acceptable manufacturers  2). Why is there 2 heights? (Refer to Cooler/Freezer Schedule on sheet M4.1	M4.1		01.06.20	Arch / Mechanical	01.06.20	1). Kolpak is basis of design for the freezer and cooler or equal  2). Refer to contract documents.
88	L.J.Morse	1). What's the difference between the 'Metal Casework' and the 'Healthcare Casework'? It looked to me that all of it was 'Metal Casework'. Where is the 'Healthcare Casework' located (room, elevation, etc)?  2). Where does Detail 8 & 9/A9.3 apply? I didn't see it on any of the Wall Sections?		123570 and 123553.13	01.06.20	Arch	01.06.20	1). All Casework in Autopsy Suite area shall be Healthcare Caseworks per Divison 123570. All other Metal Casework shall be per Metal Casework Divison 123553.13  2). Listed details are for Window Type C4 in Offices S160 and S161.
92	AIT	The spec on the Mirage "Oxy" OX-04 Royal White as a 3 x 6 size which is not very typical for Porcelain (Usually it's a Ceramic Subway Tile size) so I want to see if I can get some clarification from you on this. If you see that last email from the Flooring Contractor bidding this he said the drawings show a 12 x 24 size for this tile but the drawings/spec info state a 3 x 6 and he thinks this may be a typo? Can you please confirm size?			01.03.20	Arch	01.06.20	All tile shall be 12x24 inches in size
93	L.J. Morse	I am unable to locate pricing for a MOHAWK LIFT MODEL LMF-12. Is there an updated model number or product?	A10.1 and A10.1B - revised and attached herewith	112100 - revised and attached herewith	01.07.20	Arch	01.07.20	Refer to revised Equipment Schedule and specification - attached herewith
94	L.J.Morse	I'm being told that these only come refurbished and not new. Is that what we are to provide?  G. Portable X-ray Machine (Equipment Tag "7") 1. Description: Portable X-Ray Machine 2. Dimensions: 45.5" L X 25.5" W X 76" H 3. Model #: GE DEFINIUM AMX 700	A10.1 and A10.1A	112100	01.07.20	Arch	01.07.20	Yes

CLARIFICATIONS LOG

SERIAL NO.	ITEMS	DRAWING REFERENCE	SPEC REFERENCE	DISCIPLINE	CLARIFIED ON DATE	CORRECTIONS/ COMMENTS
1	Pallet racks in Sheriff Building; Room S164 Vehicle Storage	A10.1B (Revised and included herewith		Arch	12.30.19	Additional pallet racks on east wall of Room S164
2	Commissioning Agent			Arch	12.30.19	Owner wil contract commissioning agent
3	New Exterior access door S163C	T2.1B, A2.1, A2.1B, A3.1, A3.1B, A5.2, A5.12, A8.2, and A9.1 - revised and attached herewith		Arch	12.30.19	Add exterior access door in the Fleet Maintanance Area - Room S162. Drawings as listed - revised and attached herewith
4	S142 Bomb Unit Storage Room	T2.1B, A2.1, A2.1B, A3.1B and A9.11 - revised and attached herewith		Arch	12.30.19	Revised S142 Bomb Unit Storage Room name to "LESO Storage". Drawings as listed - revised and attached herewith
5	Doors S145 and S147A	T2.1B, T2.2, A2.1, A2.1B,A2.2, A2.2A, A3.1, A3.1B, A6.1, A6.2, A7.12, A8.5, and A9.1, A9.12 - revised and attached herewith		Arch	12.30.19	Door size revised to 4'-0" clears opening. Drawings as listed - revised and attached herewith
6	Rail openings at mezzanine	A2.2, A2.2A, A6.4, A8.2 and A8.3 - revised and attached herewith		Arch	12.30.19	(2) 4'-0" Removable Rail Section
7	Equipment	A10.1 and A10.1B - revised and attached herewith	112100 - revised and attached herewith	Arch	12.30.19 and 01.07.20	All equipment to be provided by contractor. Equipment location/mounting as per owner's direction.  Refer to revised Equipment Schedule and Division 112100, sub section 2.1 Equipment
8	Exterior Thin Brick Selection			Arch	12.30.19	<u>Thin Brick:</u> TBRK-01 - Summitville - 97 Valley Forge; Size: Norman; Texture: Velour TBRK-02 - Summitville – 27 Georgetown; Size: Norman; Texture: Velour  <u>Face Brick:</u> BRK-02 - to match thin brick TBRK-02
9	Trash Enclosure	C2.1 and L 200		Civil/ Landscape	12.30.19	Ignore chainlink fence around trash enclosure and GENSet enclosure. Follow Details on A1.1A
10	Storefront Type C3 and Type C4	9/A9.2			12.30.19	Correction to glazing for Type C3 and Type C4 shall be IG-1.
11	Chain Lift	A2.1C, S2.3		Arch	01.06.20 and 01.07.20	Provide Harrington Manual Geared trolley Chain Hoist - Capacity: 2000 lbs, 15'-0" Lift at Wash Bay F183, Grid 8 (over W8x18 - refer to S2.3)

CLARIFICATIONS LOG

SERIAL NO.	ITEMS	DRAWING REFERENCE	SPEC REFERENCE	DISCIPLINE	CLARIFIED ON DATE	CORRECTIONS/ COMMENTS
12	Clarifications to the drawings - ELECTRICAL			Electrical	01.06.20	1). E1.1: In Room C130, there are a total of two Exam Lights Type F12 in lieu of one indicated; each one is situated above a grinder Type DS. See A3.1A for more location information; see manufacturer's mounting instructions in Division 26 specifications.  2). E4.2: Detail 2: the cabinet shown on the south wall is the 42U cabinet labeled Rom S140 on E4.5.  3). E4.6: For bidding purposes, include the cost of 29 fire alarm door release relays, one for each door requiring card credentials for exit per E4.8. Door shall be unlocked upon initiation of a fire alarm sequence. Coordinate with the access control contractor and the AHJ.
13	Door S143	Related sheets will be revised and issued with future addendum		Arch	01.07.20	Reverse swing from RH to LH door (opening location to remain unchanged).
14	Ceiling Symbol Legend	A3.1B - revised and attached herewith	112100 - revised and attached herewith	Arch	01.07.21	Added "Ceiling Symbol Legend" to clarify symbols for ceiling hose drops for tranmission fluid, compressed air, power, grease and water distribution systems.